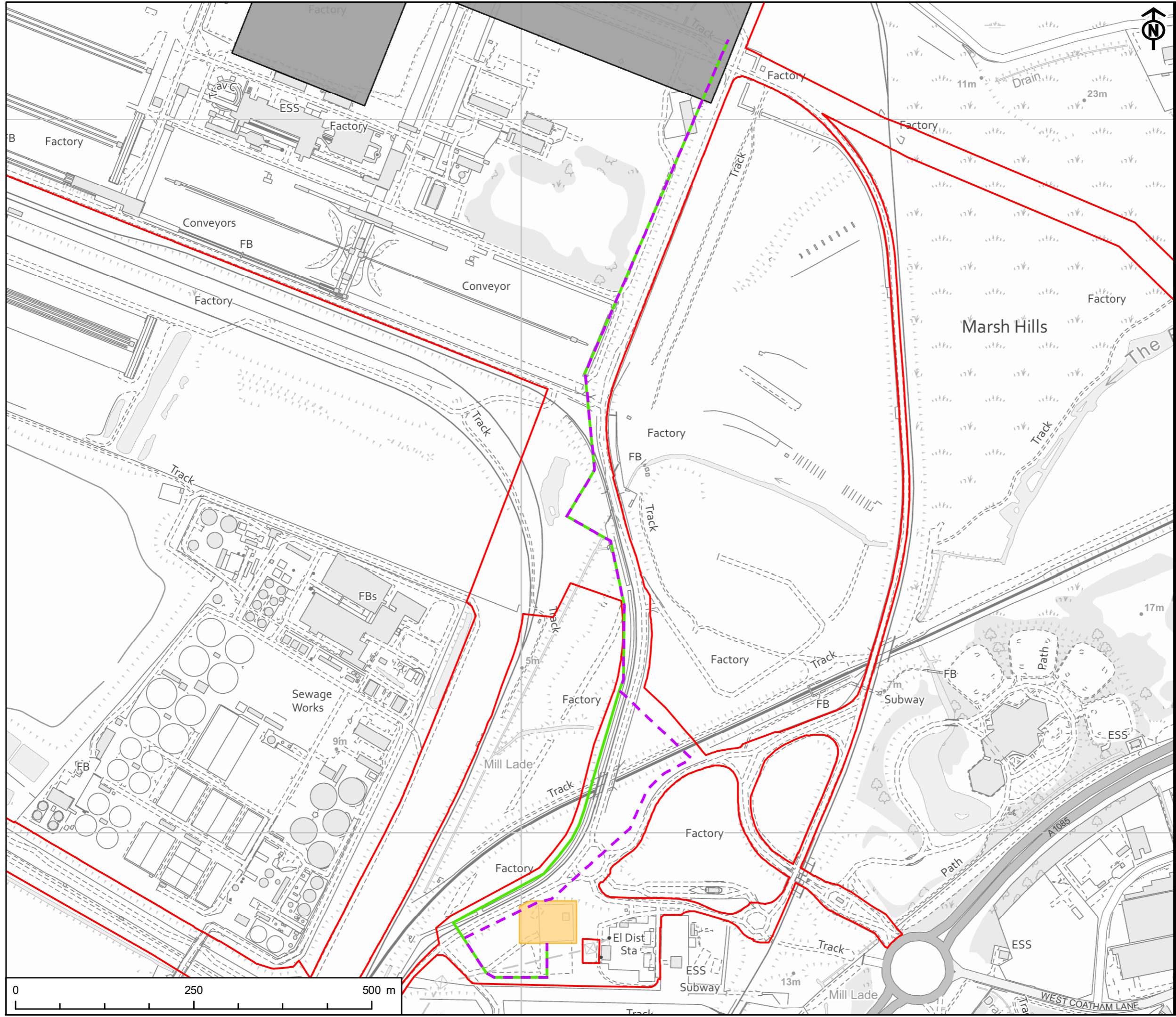


Project Management Initials: RL Designer: LC Checked: AR Approved: IC

Scale @ A3 1:5,000



APPLICANTS
 NZT POWER LTD. AND NZNS STORAGE LTD.

- KEY
- Site Boundary
 - Power, Capture and Compressor Site
 - Electrical Substation Extension
 - Indicative Electrical Connection Routes
 - Option 1A - Existing Bridge Crossing
 - Option 1B - New Conveyor Bridge Crossing

TITLE
 FIGURE 5-3
 INDICATIVE ELECTRICAL CONNECTION
 ROUTINGS

REFERENCE
 NZT_220421_ES_5-3_v6

SHEET NUMBER
 1 of 1

DATE
 21/04/2022

This drawing has been produced for the use of AECOM's client. It may not be used, modified or relied upon by third parties, except as agreed by AECOM or as required by law. AECOM accepts no responsibility, and denies any liability whatsoever, to any party that uses or relies upon this drawing without AECOM's express written consent. All dimensions are indicative and in metres unless otherwise noted. Do not scale this document.